

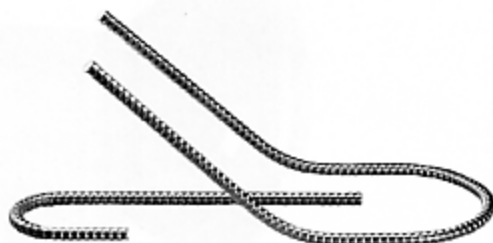
DYWIDAG TIE RODS are suitable for all giant and small-board formwork. Regardless of the system, their high loadbearing capacity, produced by their forged design, permits extreme loadability and large tie spacing. In addition, the long service life of these form ties is convincing.



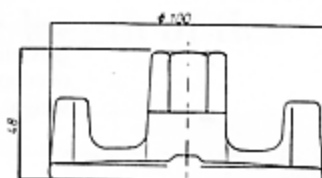
Steel Tie Rod, Dywidag 15 mm ϕ
 quality : ST 885/1080, allow. load 90 kN (DIN 18126),
 breaking load 190 kN.
 d max 17 mm, d min 15mm



Steel Tie Rod, 15 mm ϕ
 fully threaded, weldable, flexible, allow. load 85 kN,
 breaking load 170 kN.
 d max 17 mm, d min 15 mm



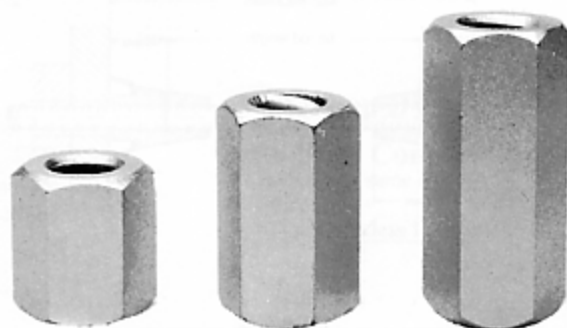
Hook & Loop Anchors



Tie Nut 100 mm
 Forged thread.
 Support surface 100 mm.
 Hot-dip galvanized.
 Flange Nut D15/100
 flange 100 mm ϕ , SW 26, quality : GTW 45,
 allow. load 90 kN (DIN 18216)
 weight : 0.73 kg



Wing Nut D 15
 With two wings, forged thread.
 Hot-dip galvanized.
 SW 26, quality : GTW 45, allow. load 90 kN
 (DIN 18126),
 weight : 0.33 kg



Hexagonal Nut D 15
 steel quality : C 35, weldable, SW 30, allow. load
 90 kN (DIN 18126), length : 30 mm, 50 mm, 70 mm
 weight : 0.22 kg

CLIMBING CONES



Climbing Cone D 15

length : 144 mm, SW 30, steel quality :
9 SMnPb28k, to be used for climbing formwork,
allow. load 90 kN (DIN 18216)
weight : 0.95 Kg



Positioning Cone D 15

length : 80 mm, steel quality : 9 SMnPb28k, for
climbing formwork, allow. load 90 kN
(DIN 18216)
weight : 0.31Kg

STEEL CONES



Steel cone, with check-lever D 15/105* plate with extra-wide base

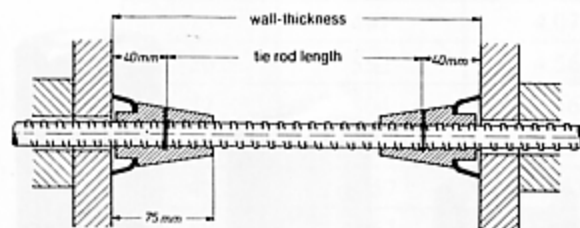
length : 105 mm, SW 30, steel quality:
9 SMnPb28k with galvanized movable plate
ø max. 80 mm, concrete overlap 55 mm,
allow. load 90 kN (DIN 18216)
weight : 0.67 kg



Steel Cone, with check-lever D 15/75* large plate

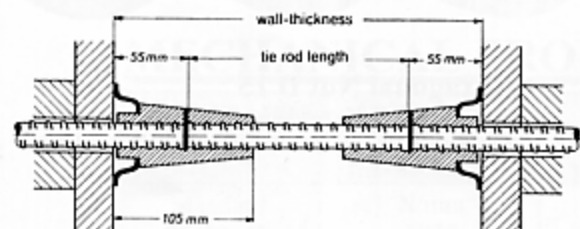
length : 75 mm, SW 24, steel quality : C 35, with
galvanized movable plate ø max. 63 mm, concrete
overlap 40 mm, allow. load 90 kN(DIN 18216)
weight : 0.34 kg

How to calculate the length of ties



Steel Cones D 15 / 75

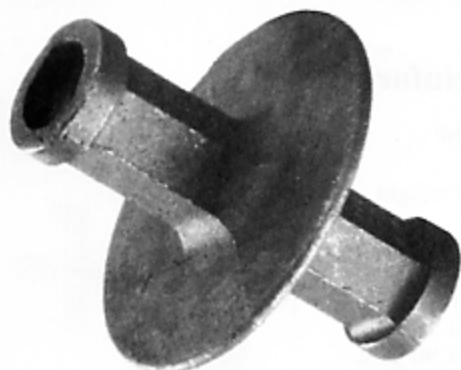
length of middle tie =
wall thickness less 80 mm



Steel Cones D 15 / 105

length of middle tie =
wall thickness less 110 mm

WATERSTOP-CENTERS



Waterstop-center D 15* with locking-device - large disc

length: 130 mm, disc \varnothing 110 mm, GTW 45, suitable for plastic tubes 26/22 mm, tie rods are reusable, allow. load 90 kN (DIN 18216). weight : 0.95 kg



Waterstop-center D 15 with locking-device - with grooves

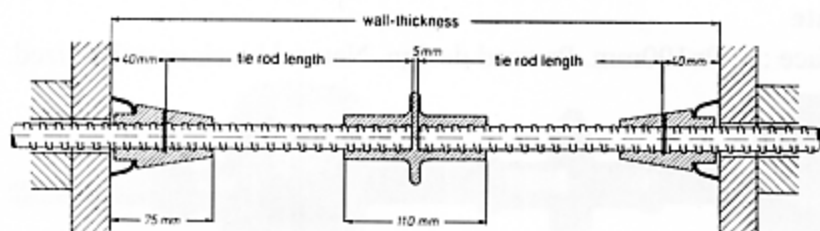
length: 115 mm, Pat. No. 2548044, allow. load 90 kN (DIN 18216) weight : 0.56 kg



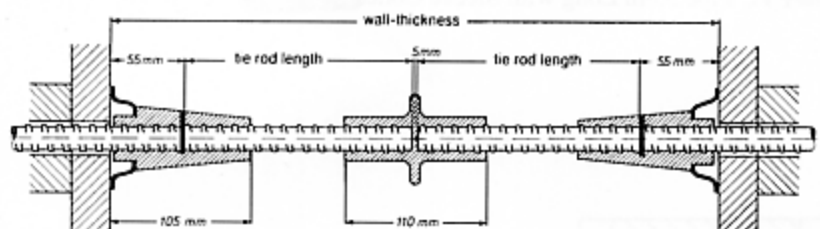
Waterstop-center D 15* with locking-device - small disc

length: 110 mm, disc \varnothing 65 mm, GTW 45, SW 30, with extension 26 \varnothing x 10 mm, allow. load 90 kN (DIN 18216) weight: 0.53 kg

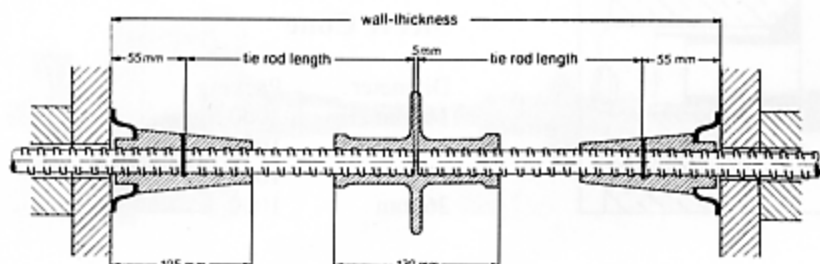
How to calculate the length of ties



Waterstop D 15
small disc
and Steel Cones D 15 / 75
2 Tie Rods of same length :
length of ties =
 $\frac{\text{wall thickness less } 85 \text{ mm}}{2}$

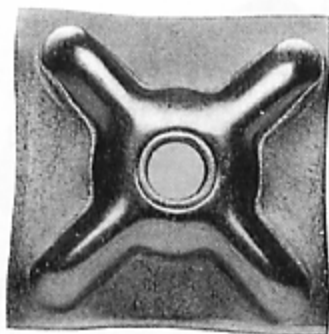


Waterstop D 15
small disc
and Steel Cones D 15 / 105
2 Tie Rods of same length :
length of ties =
 $\frac{\text{wall thickness less } 115 \text{ mm}}{2}$



Waterstop D 15
large disc
and Steel Cones D 15 / 105
2 Tie Rods of same length :
length of ties =
 $\frac{\text{wall thickness less } 115 \text{ mm}}{2}$

COUNTER PLATES



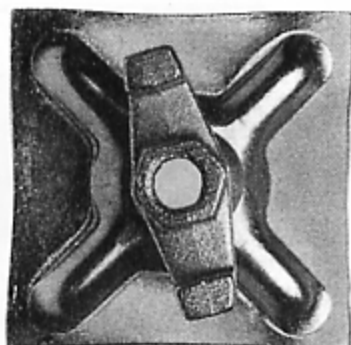
Counter Plate, reinforced

Counter Plate, reinforced

steel quality: St 45

dimensions / allow. load / weight / finish

mm	kN	kg
120x120x 8	60	0.89 galv.
120x120x10	90	1.10 galv.
150x200x 8	60	1.90 galv.



Counter Plate, reinforced, with undetachable wing nut D 15

steel quality: St 45, movable wing nut: GTW 45

dimensions / allow. load / weight / finish

mm	kN	kg
120x120x 8	60	1.30 galv.
120x120x 8	60	2.30 galv.



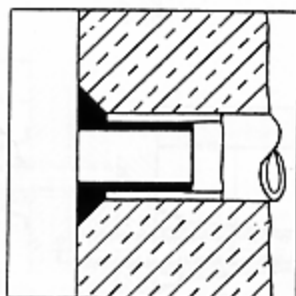
Support Plate

Support surface : 100x100mm. Pressed design. Natural black or galvanized.



PVC PIPES

PVC Pipe 5.8m Long with Sleeve Cones



Sleeve Cone

Diameter	Packing
16 mm	3000
20 mm	1000
22 mm	1000
26 mm	1000

Dywidag Tie Rods 15 mm \emptyset in Use



Connecting System D 15
Dywidag Tie Rod D 15
Plastic Tube
Counter Plates, reinf.
Wing Nuts
PVC Sleeve Cones



Connecting System D 15
Dywidag Tie Rod D 15
Steel Cones D15/105
Counter Plates, reinf.
Wing Nuts



Connecting System D 15
Dywidag Tie Rod D 15
Waterstop-Center with large disc
Plastic Tubes
Counter Plates, reinf.
Wing Nut
Hexagonal Nut
PVC Sleeve Cones



Connecting System D 15
Dywidag Tie Rod D 15
Waterstop-Center with small disc
Steel Cones D15/75
Counter Plates, reinf.
Wing Nut
Hexagonal Nut