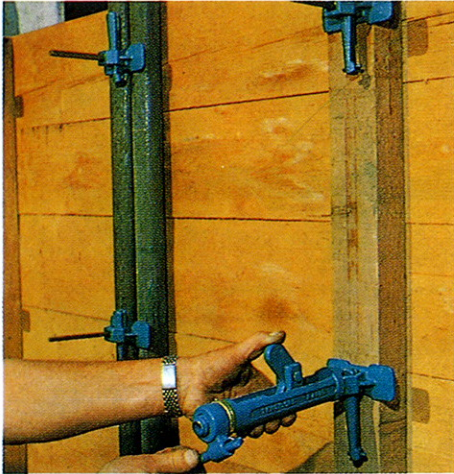
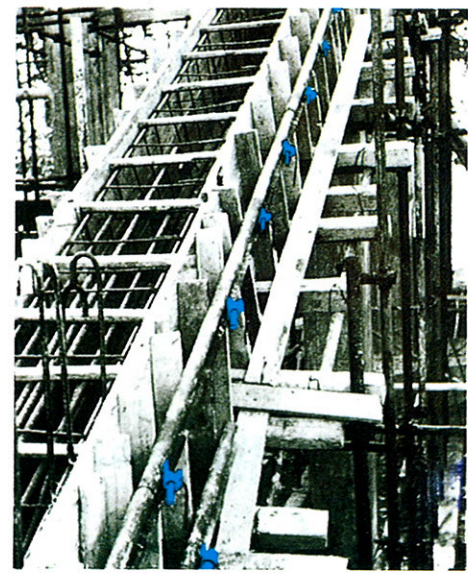


RAPID CLAMP

- not just another
formwork clamp

Today the RAPID clamp is used on a vast scale by all building companies since it offers the most rational and most secure means of locking and retaining formwork when casting concrete. The clamp can give around 40% time-saving and can be removed remarkably quickly.

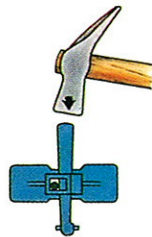


RAPID - the only formwork
clamp in the world to offer
DOUBLE SECURITY with

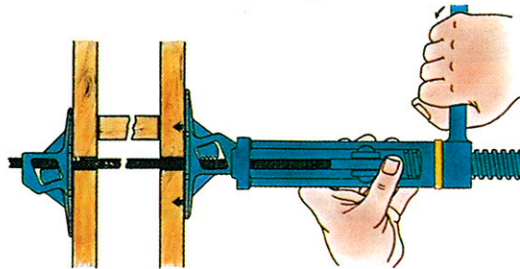
DOUBLE LOCKING
plus around 40% time-saving for fitting and removal.

LOCKING. Because of the pressure exerted by the concrete casting inside the formwork, the rod tends to slip in the clamps locking each end. This is when the locking effect takes place. The rod is gripped firmly by the wedge with longitudinal ridges made of very hard tempered steel; these bite into the steel rod and prevents it from slipping. Locking is automatic and tightens progressively as the pressure increases. In fact the wedge is forced to slide on an inclined plane, gripping it tighter as the rod increases its pull. Using RAPID clamps avoids any danger of the formwork giving way, and perfectly rectilinear casting are obtained every time.

**DOUBLE LOCKING ONLY OFFERED BY
RAPID CLAMPS.**



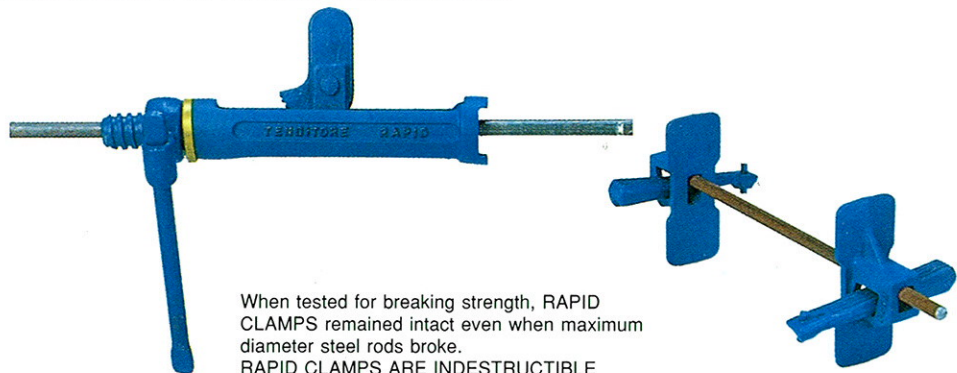
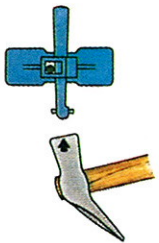
RAPID CLAMPS are very simple to use. After setting up the wooden or steel framework for concrete casting, iron rods are passed through the walls of the formwork at intervals. Wooden spacers are positioned near each of these rods (these are removed as the concrete reaches them). A RAPID clamp is attached to one end of the rod and fixed with a light hammer blow on the head of the wedge. A second RAPID clamp is applied to the other end of the rod and locked in position like the first, after the rod has been tensioned using the appropriate RAPID TENSIONER. When the operation is completed, the tensioner is removed and the process is continued with the next pair of clamps.



**RAPID
TENSIONER**

DISMANTLING THE FORMWORK is quicker than ever. Simply tap the bottom of the clamp wedge with a hammer. The RAPID CLAMP is immediately released and is ready for use over and over again.

The protruding steel rods may be cut off if the casting is to be plastered. If the casting is to be visible, the rods should be extracted and in this case they must be inserted into a rigid plastic sheath before casting begins. It is possible to extract the rods from the casting even without a plastic sheath. In this case they should be extracted within 24 hours by means of the RAPID TENSIONER. The rods must of course be absolutely straight. The holes in the casting may be filled with mortar.



GILLFORD INTERCONTINENTAL PTE LTD

BLK 163 BUKIT MERAH CENTRAL #03-3607, SINGAPORE 150163.

PHONE: (65) 273 5440, 274 6024 FAX: (65) 272 2181

Email: gillford@pacific.net.sg

[Http://www.gillford.com.sg/](http://www.gillford.com.sg/)